



**markilux** relax

A different kind of sitting.

*DUNA AZIR*  
by markilux

markilux relax



The logo for DUNA AZIR features a stylized, wavy line above the text "DUNA AZIR" in a serif font.



## Always on a voyage of discovery

Colourful collages are strewn over a long table, between fabric and colour samples. On the walls hang beautiful photographic motifs. They tell the story of a day at the beach, of the mystery of oriental bazaars, of ornate architecture and seemingly endless sand dunes. In this realm of Annette Busch, Kirstin Herrmann and Miriam Yoo dreams in fabric are spun.

The creative team for textile design of the Schmitz Werke from Emsdetten, with the exotic name 'Duna Azir' is constantly on the lookout for new ideas, designs and colour themes.

To source their inspiration the Duna Azir creative team travels to international trade shows and events, visits museums and shops, reads newspaper articles and press releases and listens to the word on the street.

Textile designer Miriam Yoo adds: "Many ideas come intuitively, from a large repertoire of images in the mind that have been collected over time. However, we always have to keep an eye on the current market situation and monitor trends too", she stresses.

Often one of them has an initial approach, a stimulus that sets the direction. This is followed by brainstorming, and brainstorming and testing in project groups. The results are not only new fabric collections, but also new product lines like the 'markilux relax seat'.

"The fundamental idea behind the relax seat was to create comfortable and dynamic furniture", explains textile designer Kirstin Herrmann. In order to do this a range of seating cultures from around the world were examined. "We were particularly fascinated by the oriental tradition of sitting on the floor. This formed the inspiration for our new range of furniture", says Herrmann with enthusiasm.

## markilux relax The Creation



*The creative team 'Duna Azir' is constantly on the lookout for new inspiration and the next idea for beautiful fabric creations.*

  
DUNA AZIR



markilux relax



*DUNA AZIR*



## A different kind of sitting.

We sit for much of the day. Sometimes on hard surfaces, sometimes on soft surfaces and often uncomfortably. Yet if we are going to sit for long periods of time then we should at least do it as comfortably and as ergonomically as possible.

In order to design a range of comfortable furniture markilux examined, in great depth, sitting and seating traditions. The creative team Duna Azir, lead by designer Annette Busch, examined the seating traditions of a number of different cultures from across the world. The result of this research is the markilux relax seat, with its ergonomic L-shape, for inside and outside.

"Today we are convinced that we should sit on chairs, armchairs and sofas, however, for a long time people sat predominantly on the floor", says Annette Busch.

The creative team 'Duna Azir', which has a reputation for unconventional approaches in their search for new product ideas, were most impressed by the seating culture of the nomads of the orient. Their mobile lifestyle made it difficult to transport bulky furniture. Accordingly they laid self-woven carpets on top of the desert sand to create comfortable, cushioned seating areas.

"This form of seating made us curious. We asked ourselves: what can we learn from the nomads?" explains Annette Busch. "I think everyone who has ever sat on warm sand knows how pleasantly it nestles around the body and how it adjusts to every movement."

Accordingly the Duna Azir team came to the conclusion that the nomads had discovered the most comfortable form of sitting with their landscapes of carpet-covered sand dunes. "Exactly that is what we have tried to replicate with the markilux relax seat," explains the designer. "A comfortable, dynamic and ergonomic piece of furniture."

## markilux relax The Concept



*Thousands of long-lasting comfort beads give the relax seat its curved, armchair-like shape, with its broad seating surface and its backrest adapted to the body.*

  
DUNA AZIR



# markilux relax

## The Range

### markilux relax indoor

The indoor collection contains a range of high-quality upholstery fabrics manufactured by the Schmitz-Werke. The fabrics come in a wide range of colours and have a high weight per square meter and excellent abrasion resistance qualities. The indoor range is suited for internal use only.



### markilux relax outdoor

The markilux outdoor relax seat fulfils the highest quality standards for use on patios and balconies or in conservatories. The fabrics from the outdoor collection are lightfast and weatherproof, but not waterproof.

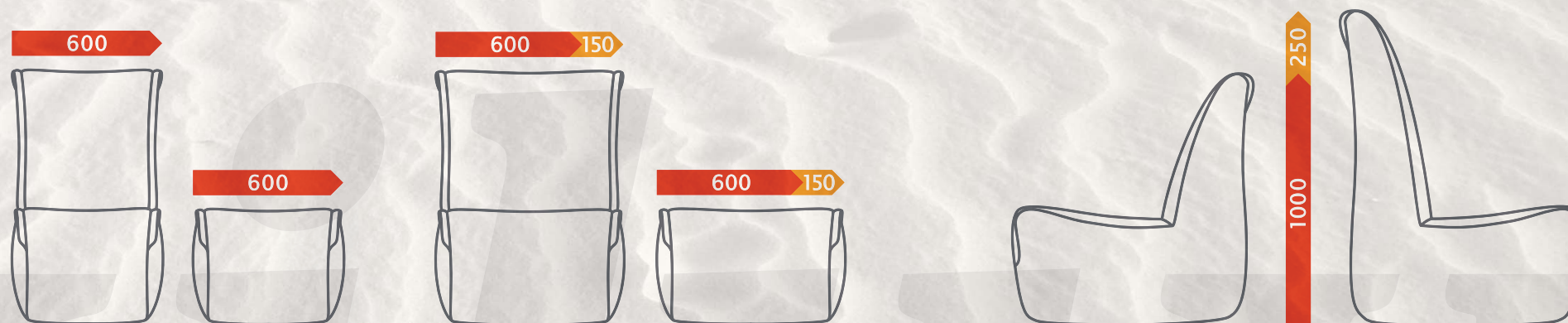


### markilux relax outdoor+

The outdoor+ collection contains a range of premium quality technical textiles manufactured by the Schmitz-Werke. The fabrics are highly durable and are coated to make them highly water-repellent. Accordingly, the robust outdoor+ relax seat is perfect for all external applications.



## markilux relax The Variants



### Tailor your own seating experience

#### Seat Widths

The markilux relax seat is available in two widths allowing for highly personalised seating comfort. The width of the footstool is also perfectly matched to the seat making it the perfect addition. Find your own favourite position.

#### Backrest Height

No two people are the same - with the customisable backrest height you can configure the markilux relax seat to perfectly fit your body shape. The relax seat comes standard with a 100 cm high backrest. The backrest is optionally available in 125 cm.

/// made in Germany

DUNA AZIR



**markilux** relax - comfortable, dynamic seating



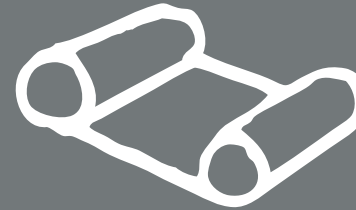




### Dynamic, comfortable seating

The markilux relax seat offers a comfortable and dynamic seating experience. This casual furniture in a comfortable L-shape for inside and outside is highly colourful and filled to the brim with thousands of small, dimensionally-stable beads made of polypropylene foam. Colourful, easy-care and extremely robust upholstery fabrics in vibrant plains, block stripes and patterns allow plenty of scope for personal preference.

The dimension of the relax seat can be configured to offer optimum seating comfort for every individual. A matching footstool and flexible arm and neck rest in different sizes make the markilux relax seat a well-rounded seating experience. Why not try this different kind of sitting?



## markilux relax The Elements



*A practical and flexible cushion can be used either as an arm or a neck rest and enhances seating comfort.*

**markilux** relax indoor



*DUNA AZIR*





## A splash of colour for indoors

The fabrics for the markilux indoor relax seat are easy to clean and abrasion resistant. They are all manufactured in the Schmitz-Werke's in-house weaving mill and carry the "Confidence in Textiles" label testifying to their certification according to Öko-Tex® Standard 100.

The indoor collection not only provides a colourful touch to any internal living space, but also offers the perfect combination of comfortable and ergonomic seating.

### Fabrics

- premium quality upholstery fabrics 'Made in Germany'
- perfect for internal use
- abrasion resistant (approx. 80,000 cycles)
- weight per square metre (approx. 405 g/m<sup>2</sup>)
- certified according to Öko-Tex® Standard 100

### Lining

- technical fabric manufactured by the Schmitz-Werke
- certified according to Öko-Tex® Standard 100
- ensures optimal dimensional stability of the seat
- the filling is double-sealed by means of a zipper and additional Velcro fastener
- top fabric can be removed if required.

### Filling

- high quality expanded Polypropylene filling
- high bulk density provides enhanced seating comfort
- EPP filling returns to original shape after sitting
- certified according to Öko-Tex® Standard 100

### Accessories

- flexible cushion which can be used either as an arm or a neck rest.

 made in germany

## markilux relax indoor



  
DUNA AZIR

**markilux** relax indoor



*DUNA AZIR*



# markilux relax indoor



23929  
white

23928  
anthracite



23931  
yellow

23928  
anthracite



23922  
orange

23928  
anthracite



23933  
red

23928  
anthracite



23925  
blue

23928  
anthracite



23936  
green

23928  
anthracite

The fabrics have been specially selected to ensure optimal colour and pattern combinations. Within the indoor category all fabrics can be combined as desired. Slight variations in colours may occur.

**markilux** relax outdoor







## Comfort and colour in the sun

The fabrics for the markilux outdoor relax seat are easy to clean and abrasion resistant. Furthermore they are highly lightfast and weather resistant making them the perfect choice for patio and balcony furniture. A Teflon® coating makes them highly dirt and grime resistant. The fabrics are all manufactured in the Schmitz-Werke's in-house weaving mill and carry the "Confidence in Textiles" label testifying to their certification according to Öko-Tex® Standard 100.

Vibrant plains, modern striped patterns and warm colours offer endless possibilities for patio, balcony and conservatory design.

### Fabrics

- high quality exterior textiles 'Made in Germany'
- suited for external use
- highly lightfast
- grime and water-repellent thanks to Teflon® coating
- certified according to Öko-Tex® Standard 100

### Lining

- technical fabric manufactured by the Schmitz-Werke
- certified according to Öko-Tex® Standard 100
- ensures optimal dimensional stability of the seat
- the filling is double-sealed by means of a zipper and additional Velcro fastener
- top fabric can be removed if required.

### Filling

- high quality expanded Polypropylene filling
- high bulk density provides enhanced seating comfort
- EPP filling returns to original shape after sitting
- certified according to Öko-Tex® Standard 100

### Accessories

- flexible cushion which can be used either as an arm or a neck rest.

 made in germany

## markilux relax outdoor



*The bright outdoor fabrics not only provide a splash of colour to patios, but are also perfectly matched to the markilux range of awnings.*

  
DUNA AZIR

**markilux** relax outdoor



56316  
visutex green

56418  
black plain



56317  
visutex yellow

56401  
yellow plain



56388  
visutex grey

56418  
black plain



56320  
visutex red

56418  
black plain



**markilux** relax  
outdoor



56947  
block stripes caramel



56936  
block stripes green



46117  
beige fine weave\*



46107  
chocolate fine weave\*



46108  
grey fine weave\*



56938  
block stripes grey



56904  
block stripes violet



46217  
beige textured weave\*



46207  
chocolate textured weave\*



46208  
grey textured weave\*

57544  
caramel plain

57576  
green plain

56437  
beige plain

56447  
chocolate plain

56418  
black plain

57578  
grey plain

57574  
violet plain

56437  
beige plain

56447  
chocolate plain

56418  
black plain

The fabrics have been specially selected to ensure optimal colour and pattern combinations. Within the outdoor category all fabrics can be combined as desired. Slight variations in colours may occur.

\* for technical reasons these patterns are only suited as top fabrics.

markilux relax outdoor+



DUNA AZIR





### Comfort beads combined with a technical textile.

The outdoor+ collection comprises a range of highly weatherproof fabrics which are perfectly suited for external use. Manufactured in the Schmitz-Werke's very own weaving mill, the outdoor+ collection of fabrics is highly durable and robust, meaning it can be used in any external setting. Additionally, all fabrics from the outdoor+ collection are highly abrasion resistant and are protected with a marine-grade waterproof coating. They are also certified to Öko-Tex Standard 100. A choice of six plain fabric patterns offers plenty of possibilities when it comes to giving outdoor living areas a subtle, yet elegant dash of colour.

#### Fabrics


- robust exterior fabrics ‚Made in Germany‘
- perfect for external use
- highly lightfast
- weatherproofing on the reverse of the fabric
- dirt and grime resistant
- high dimensional stability and tensile strength
- certified according to Öko-Tex® Standard 100

#### Filling

- high quality expanded Polypropylene filling
- high bulk density provides enhanced seating comfort
- EPP filling returns to original shape after sitting
- certified according to Öko-Tex® Standard 100

#### Accessories

- flexible cushion which can be used either as an arm or a neck rest.

 made in germany

**markilux** relax  
outdoor+



*Like sitting in soft, warm sand. The comfort beads nestle around the body providing dynamic support and an highly ergonomic seating experience.*

  
DUNA AZIR

**markilux** relax outdoor+



*DUNA AZIR*



**markilux** relax  
outdoor+



35725  
blue

35796  
navy blue



35725  
blue

35725  
blue



35762  
grey

35749  
black



35719  
off-white

35737  
beige



35719  
off-white

35719  
off-white



35749  
black

35749  
black

The fabrics have been specially selected to ensure optimal colour and pattern combinations. Within the outdoor+ category all fabrics can be combined as desired. Slight variations in colours may occur.

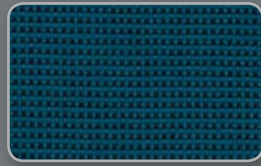
# markilux relax Fabric & Pattern Overview

indoor



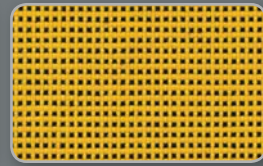
orange

23922



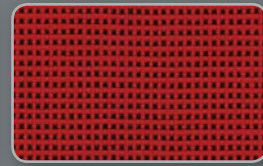
blue

23925



yellow

23931



red

23933



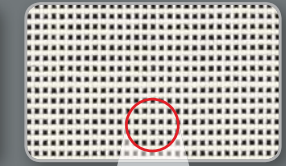
green

23936



anthracite

23928



white

23929

outdoor



block stripes grey

56938



block stripes green

56936



block stripes caramel

56947



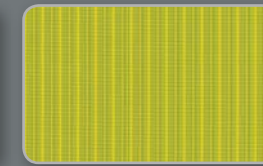
block stripes violet

56904



visutex yellow

56317



visutex green

56316



grey plain

57578



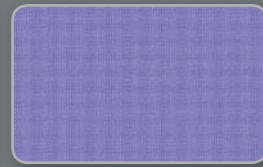
green plain

57576



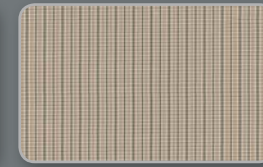
caramel plain

57544



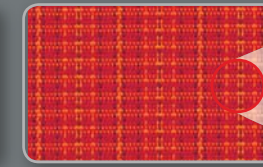
violet plain

57574



visutex grey

56388



visutex red

56320



chocolate plain

56447



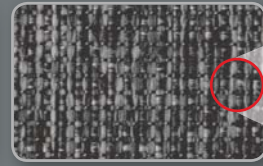
beige fine weave

46117



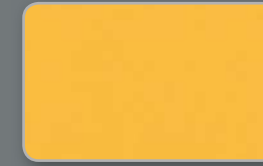
chocolate fine weave

46107



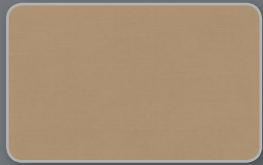
grey fine weave

46108



yellow plain

56401



beige plain

56437



beige textured weave

46217



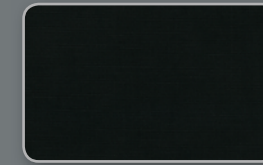
chocolate text. weave

46207



grey textured weave

46208



black plain

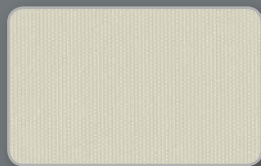
56418

outdoor+



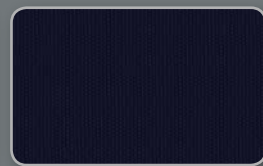
beige

35737



off-white

35719



navy blue

35796



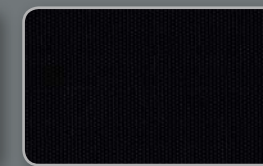
grey

35762



blue

35725



black

35749





## Confidence in Textiles

All materials from the markilux relax collection, including the filling, are certified to Öko-Tex® Standard 100.

The "Confidence in Textiles" label is an international symbol of responsible textile manufacture, safety and transparency.

## Teflon® coating

The Teflon® coating provides optimum protection against dirt and grime.

## Care instructions

Fabric covers from the indoor and outdoor ranges can be machine washed according to the care instructions.

Seats from the outdoor+ range can be cleaned with warm soapy water.

indoor	outdoor	outdoor+

made in germany

# markilux relax Quality Seal



All products from the markilux Home range are: 'Made in Germany'

DUNA AZIR



04/12 · We reserve the right to make technical modifications without giving prior notice.

7609687